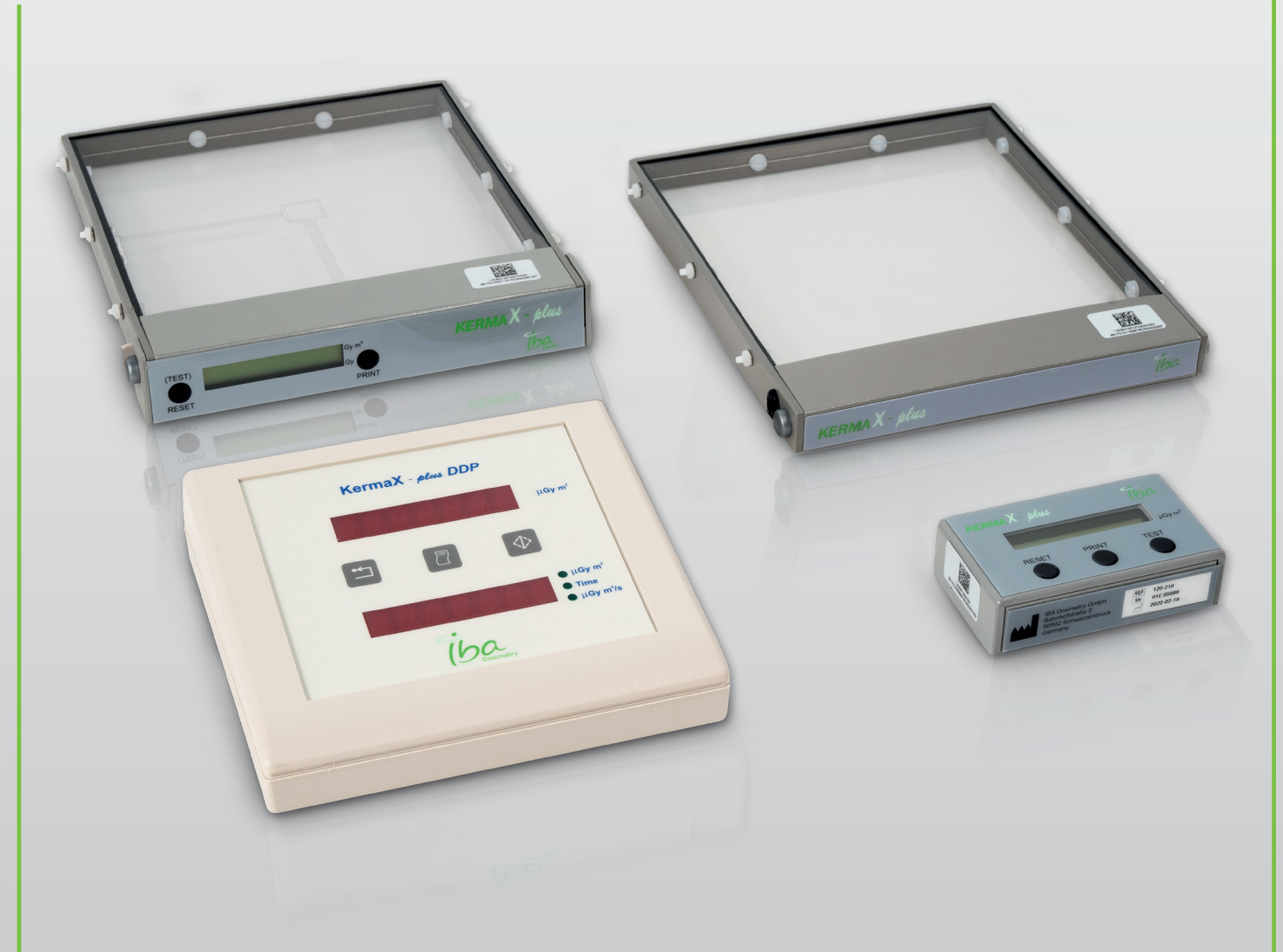




## KermaX-plus® – Technical Specifications

	IDP regular size	IDP micro size	regular size	micro size
Dimension	179×166×28mm	158×144,5×28mm	179×166×17mm	158×144,5×17mm
Active Area	140×140mm	115×115mm	140×140mm	115×115mm
DAP measurement range	0.1 $\mu\text{Gym}^2$ – 99999999,99 $\mu\text{Gym}^2$		0.1 – $\infty$ $\mu\text{Gym}^2$	1.0 – $\infty$ $\mu\text{Gym}^2$
DAP resolution	0.01 $\mu\text{Gym}^2$		0.01 $\mu\text{Gym}^2$	0.1 $\mu\text{Gym}^2$
DAP Rate measurement range	0.1 – 3000 $\mu\text{Gym}^2/\text{s}$		0.1 $\mu\text{Gym}^2/\text{s}$ – 3000.00 $\mu\text{Gym}^2/\text{s}$	1.0 $\mu\text{Gym}^2/\text{s}$ – 30000.0 $\mu\text{Gym}^2/\text{s}$
DAP Rate resolution	0.01 $\mu\text{Gym}^2/\text{s}$			0.1 $\mu\text{Gym}^2/\text{s}$
Linearity	< 5%			
Reproducibility	< 1%			
Min. measuring Time	1 ms			
Measuring time resolution	50 ms	0.5 ms	50 ms	
Energy Dependence	±8% [40 kV - 150 kV]		±8% [40 kV - 150 kV]	
Optical transparency	≥ 75%			
Reference Beam Quality	RQR8			



# KermaX-plus®

DAP Meter for Patient Dose Monitoring

KermaX®-Br\_Rev.1\_0824\_E | All rights reserved | Manufacturer: IBA Dosimetry GmbH.  
 Technical specifications and product features are subject to change without prior notice.



**IBA Dosimetry**  
 Independent & Integrated Quality Assurance  
 Europe, Middle East, Africa | +49-9128-6070  
 North America and Latin America | +1 786 288 0369  
 Asia Pacific | +86-10-8080-9288  
 dosimetry-info@iba-group.com | iba-dosimetry.com

@ibadosimetry





# KermaX-plus®

## Key benefits

- **Installation Flexibility** – Seamless integration to almost all collimators and workflows
- **Cost effective installation** – Based on standard cables
- **Efficient Measurement** – Measures DAP and DAP rate simultaneously in high resolution [0,01  $\mu\text{Gym}^2$  + 0,01  $\mu\text{Gym}^2/\text{s}$ ]
- **Complies with international standard :**  
IEC 60580:2019  
IEC 60601-1  
SGS North America certification mark  
Compliance with: ANSI/AAMI ES60601-1, CAN/CSA-C22.2 No. 60601-1

### KermaX-plus® IDP

The optimal measuring device for easy retrofitting to mobile X-ray systems with integrated display.

- Rectangular, transparent ionization chamber with integrated electronics and a 10-digit, backlight LCD display, interface for PC or printer optional
- Due to the digital DAP resolution of 0,01  $\mu\text{Gym}^2$  can also be used in pediatric environments

### KermaX-plus® SDP

The optimal measuring device for easy retrofitting with a small separate display.

- Rectangular, transparent ionization chamber with integrated electronics
- Separate 10-digit, backlight LCD single-line display
- RS232 interface for computer or printer (optional)
- Can also be used in pediatric environments due to the digital DAP resolution of 0,01  $\mu\text{Gym}^2$

### KermaX-plus® DDP

The optimal measuring system for easy retrofitting with dual line display.

- Up to 2 rectangular, transparent ionization chamber with integrated electronics
- Consists of dual line 7-digit segment LCD Display
- It's possible to show DAP and DAP Rate or exposure time in same time.
- Two RS232 interfaces for RIS/KIS and printer (optional accessory)

Display	IDP	SDP	DDP
Dimension	–	79 × 23 × 44 [mm]	138,5 × 129 × 44 [mm]
Display	LCD 12 character display	LCD 12 character display	2 lines red LED 7 character display
Value Display	10 digits	10 digits	7 digits
DAP unit	$\mu\text{Gy m}^2$		
DAP Rate unit	$\mu\text{Gy m}^2/\text{s}$		
Time unit	hh.mm.ssss	hh.mm.ssss	h.mm.ssss

## Accessories

### – Cable

5 m / 16 ft, 6 m / 20 ft, 12 m / 40 ft, 18 m / 50 ft, 24 m / 80 ft, 30 m / 11.8 ft, 35 m / 13.8 ft, 40m / 15.8 ft

### – Rails

176 mm / 6.9 ft, 167mm / 6.6 ft, 150 mm / 5.9 ft, 146 mm / 5.7 ft

### – Power Supply

EU, UK, US, or no plug

### – Adapter with accessory holder

176 mm / 6.9 ft, 167mm / 6.6 ft (optionally extension rails, e.g. for Al-Pre-Attenuator-Filter 25 mm)

### – RIS/HIS

Connection Set (RS232) to computer

