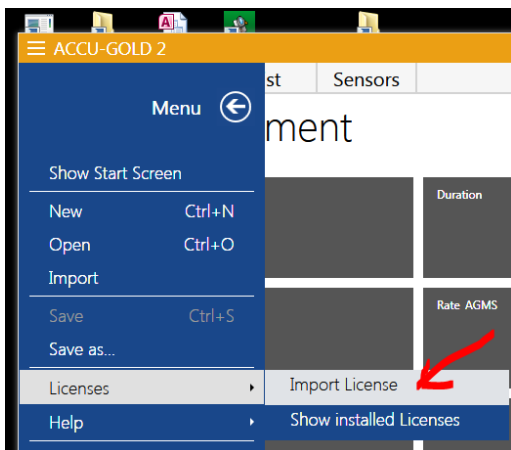
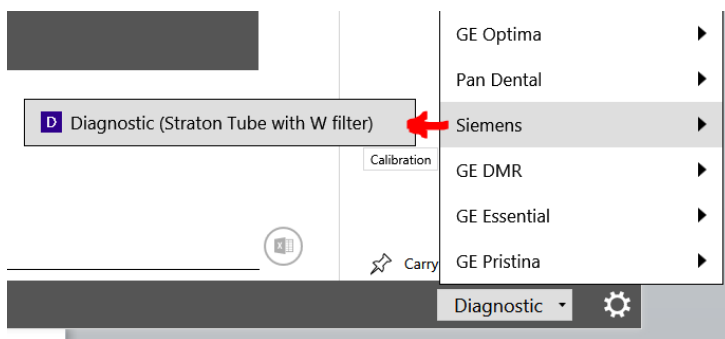


## AN1012 - Using Accu-Gold 2 on a Siemens CT with Straton Tube

- In order to make seamless measurements on a Siemens CT that uses a Straton tube, a Model 8155 Tungsten Filter has been developed to be used together with a special calibration.
- Included on this flash drive is the calibration file needed for using it with the Accu-Gold software.
- Open the AG2 software then choose on the menu to import the license:



- Point to the “2018-09-18 CORR Somaton-straton W.aglicenses” file on the flash drive and click Open.
- When making measurements on the machine, select the Anode/Filter combination for Siemens, then Stranton Tube with W filter:



- Make sure the sensor has the Tungsten filter in place before making the measurements.

### Custom anode/filter calibrations for **Siemens**

Anode/Filter	Tube	Range of Applications			
		kV	Filt (mm)	hvl (mm Al)*	Paddle**
W/Al	Siemens Straton Tube CT with W filter	40-140	0-29	5-10	MDL8155 filter required



## AN1012 - Using Accu-Gold 2 on a Siemens CT with Straton Tube

- In order to use the appropriate cal file for the Touch, Touch WiFi and the Accu-Gold Nugget, use the links on our webpage to reinstall the firmware. The firmware will include the cal file automatically.
- Got to [www.Radcal.com](http://www.Radcal.com), choose the Support page then Accu-Gold Software. Download the appropriate firmware and follow the instructions.

### **Accu-Gold Nugget Firmware**

- Nugget Update V1.11.1
- Firmware upgrade instructions

### **Accu-Gold Touch Firmware**

- AGT Update V1.9.1.9
- Firmware upgrade instructions

### **Accu-Gold Touch WiFi Firmware**

- AGTWiFi Update V1.11.1.2
- Firmware upgrade instructions

Thank you for using Radcal products. If you have any questions don't hesitate to contact us:

Chris Romero

[Cust\\_sup@Radcal.com](mailto:Cust_sup@Radcal.com)

(626)357-7921 ext 123