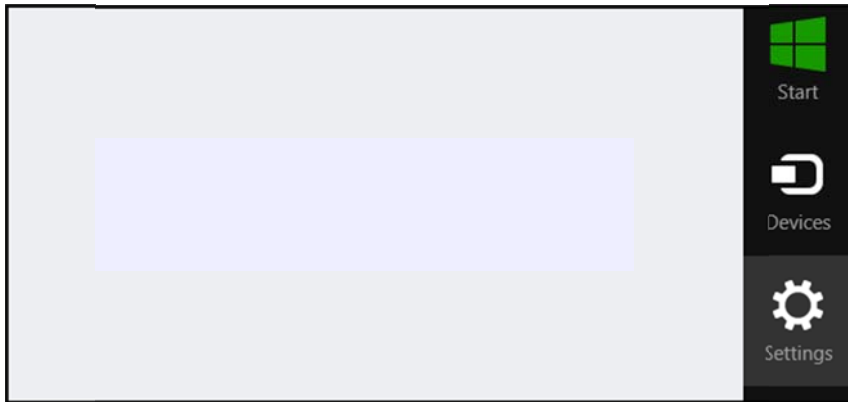


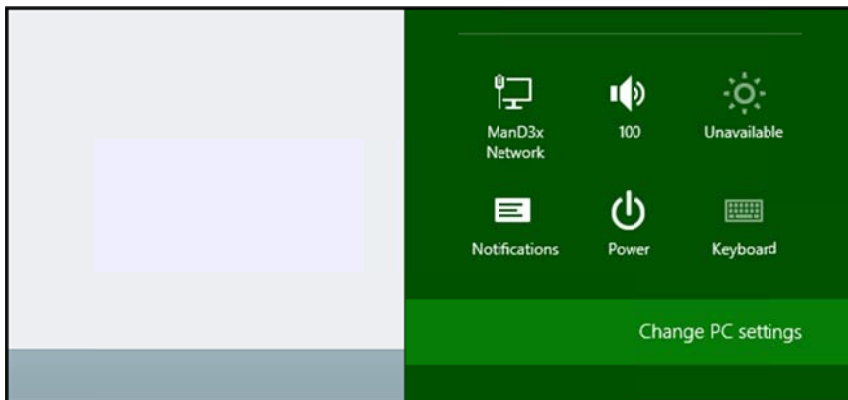
Starting with 64-bit versions of Windows Vista and later versions of Windows, driver code signing policy requires that all driver code have a digital signature. In addition, certain configurations of 32-bit versions of Windows Vista and later versions of Windows also require driver code to be digitally-signed. Windows 8.1 has stricter policies in this respect and since Rapidose has been built with older drivers that do not have the digital signature required, we have included this workaround for customers that are need to move their Rapidose equipment to Windows 8.1 computers.

How to Disable Driver Signature Verification on Windows 8.1

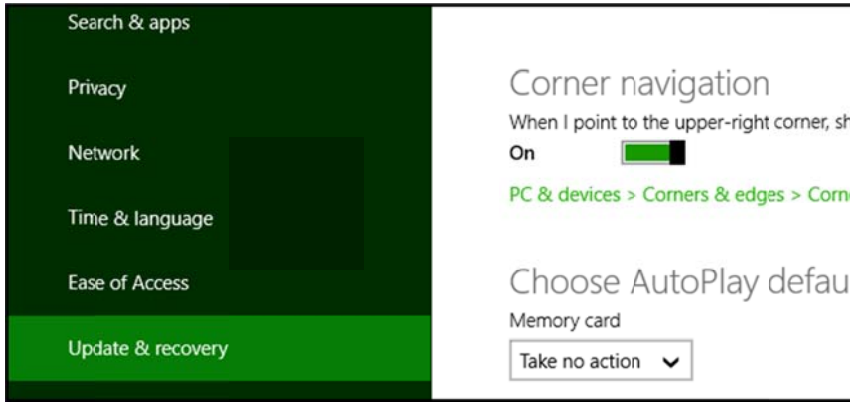
Press the Win + C keyboard combination to bring up the Charms Bar, and then click on the “Settings” Charm.



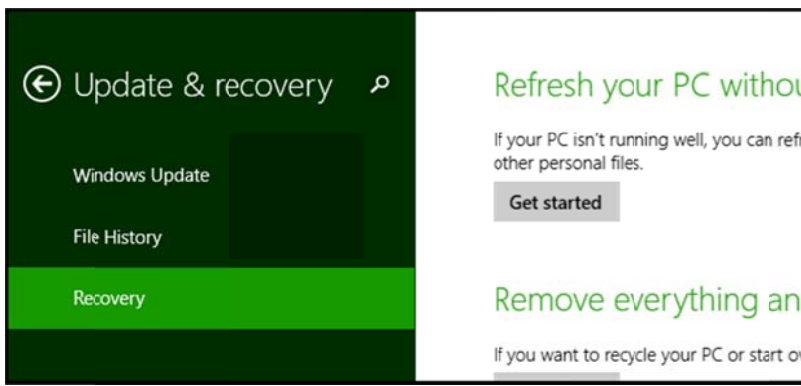
Click on the “Change PC settings” link.



When the Control Panel opens, click on the “Update & recovery” section.



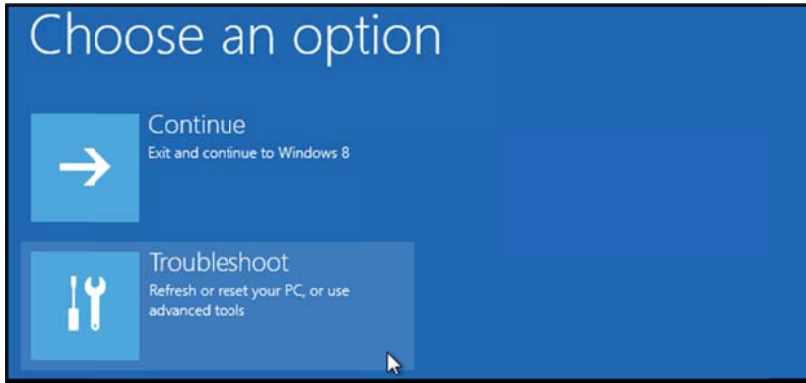
Click on the “Recovery” option on the left hand side.



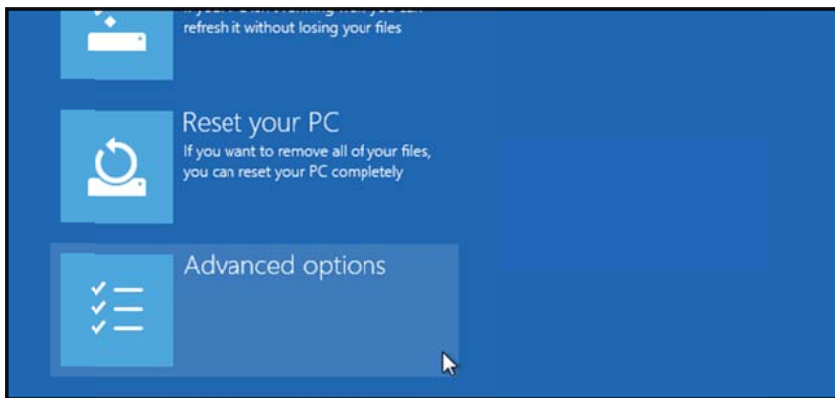
You will see an advanced startup section appear on the right hand side. Click on the “Restart now” button.



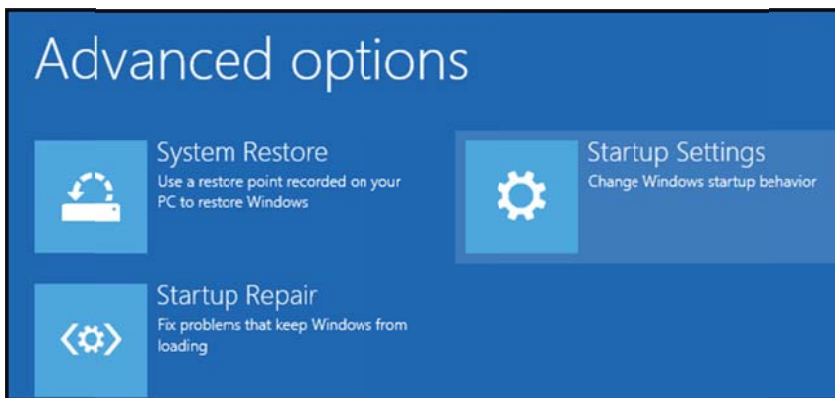
After your Computer has rebooted, choose the “Troubleshoot” option.



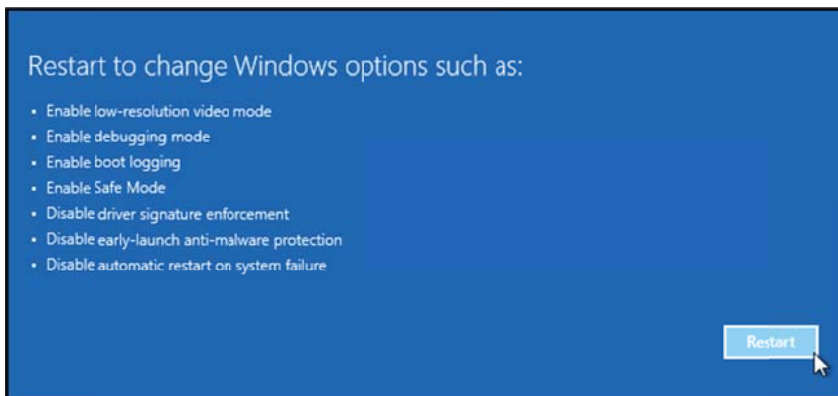
Click on "Advanced options".



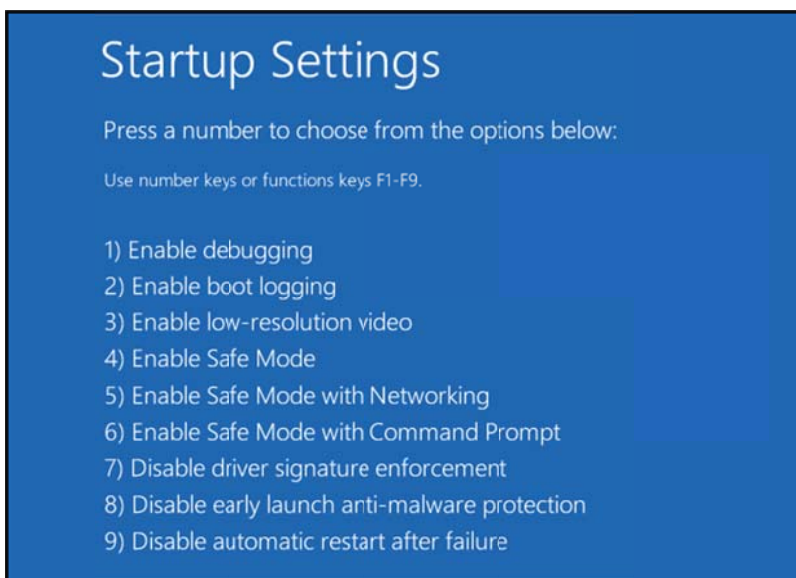
Click on "Startup Settings".



Since we are modifying boot time configuration settings, you will need to restart your Computer one last time. Click on "Restart".

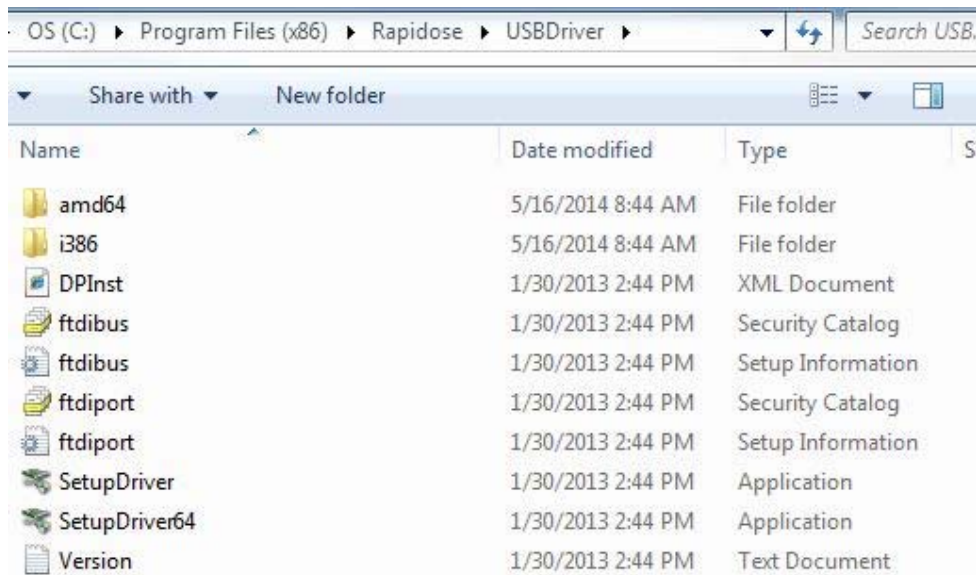


Finally, you will be given a list of startup settings that you can change. The one we are looking for is “Disable driver signature enforcement”. To choose that setting, press the F7 key.



Once the PC reboots, connect the Rapidose hardware, run the software and check for initialization. If the sensor is Ready to measure the process is complete. If not, disconnect the hardware and navigate to:

(C:)/program files(x86)/Rapidose/USBDriver



Run the version that applies to your operating system. Windows will indicate the appropriate driver when running the setup.

32bit PC run SetupDriver

64bit PC run SetupDriver64

Once complete, connect the hardware and check for initialization using the software. Should these instructions not work or you require further assistance please contact cust_sup@radcal.com