



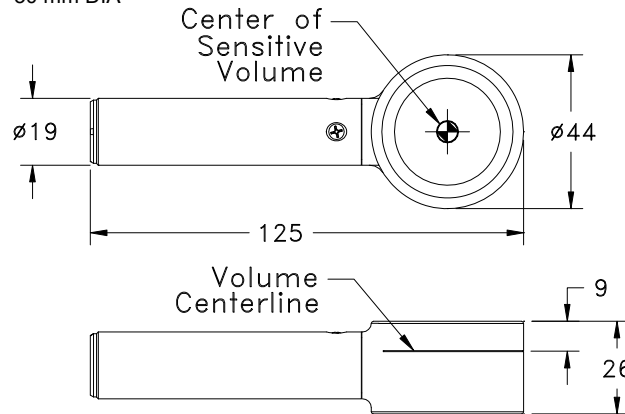
10X6-6M

The Dedicated Mammography Chamber

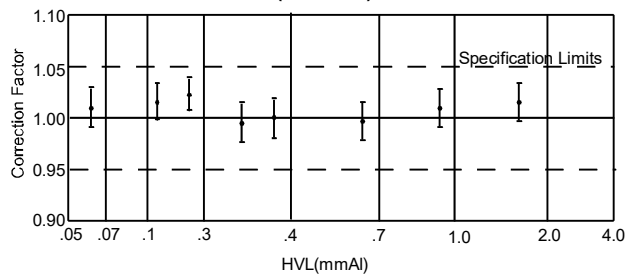
A world standard for mammography, ready for any mammographic track-filter combination. Also recommended for measuring exposure time in Auto Dose mode. The range of time (pulse width) extends from 10ms to 9999s.

Specifications¹

Rate Specifications	2 μ R/s - 10 R/s 20 nGy/s - 88 mGy/s
Exposure Specifications	10 μ R - 59 kR 100 nGy - 516 Gy
Cine Specifications:	N/A
Auto Dose Threshold	2 mR/s 19 μ Gy/s
Calibration Accuracy:	$\pm 4\%$ using X-rays @ 30kVp & 0.50mm Al HVL
Exposure Rate Dependence:	$\pm 5\%$, 0.02 R/min to 600 R/min
Energy Dependence	$\pm 5\%$, 10 keV to 40 keV
Construction:	Parallel plate with 0.7 mg/cm ² metalized polyester window; polyacetal exterior; 6cm ³ active volume; 0.08 kg
Environmental:	15° - 35° C working, 0° - 60° C storage, < 80% RH (non-condensing), 70-106 kPa
Minimum Field Size ² :	30 mm DIA



-6M Ion Chamber Dimensions in millimeters
Energy Dependence
(TYPICAL)



Warning: Introduction of material other than air behind the chamber will cause its response to change due to backscatter.

¹ Specifications apply when used with Accu-series control units.

² A field size greater than the Minimum Field Size by at least 10 mm recommended.